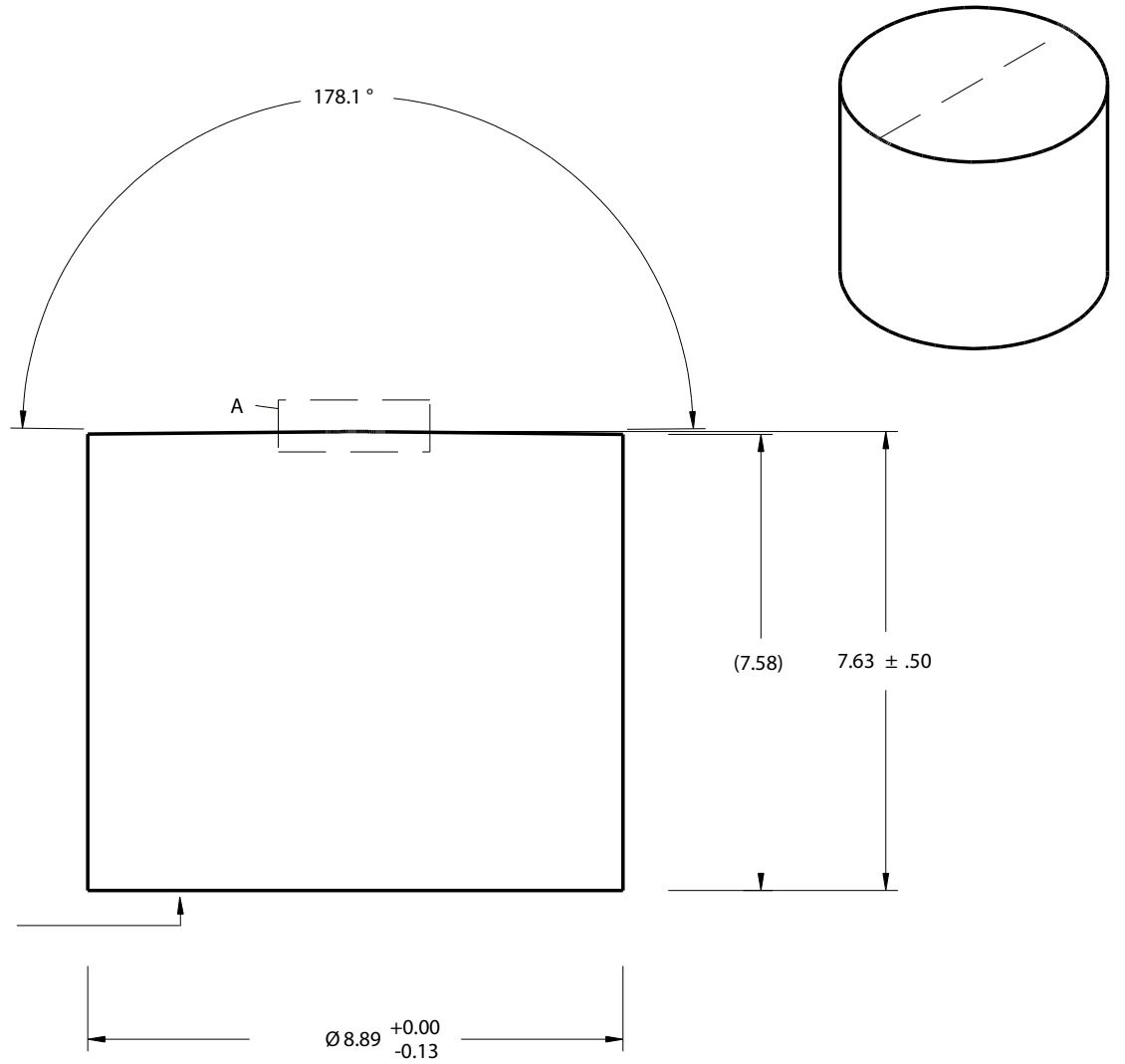
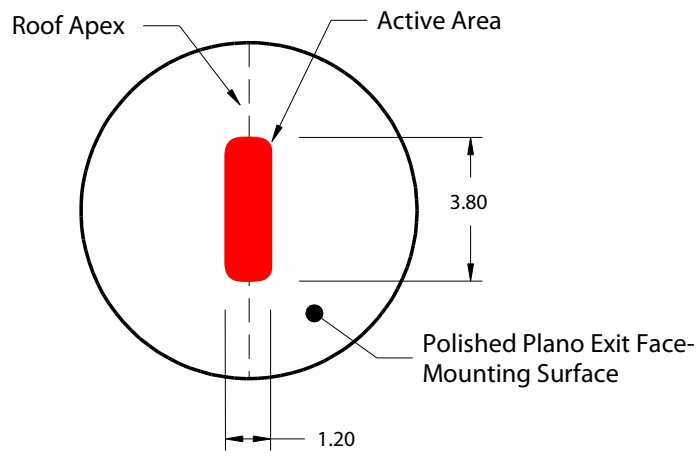


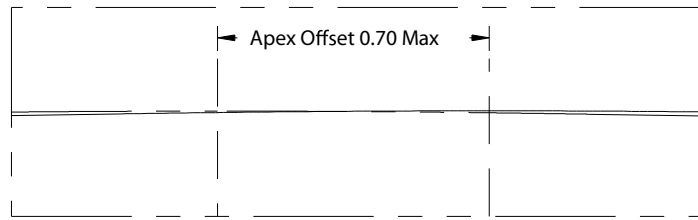
Detail A



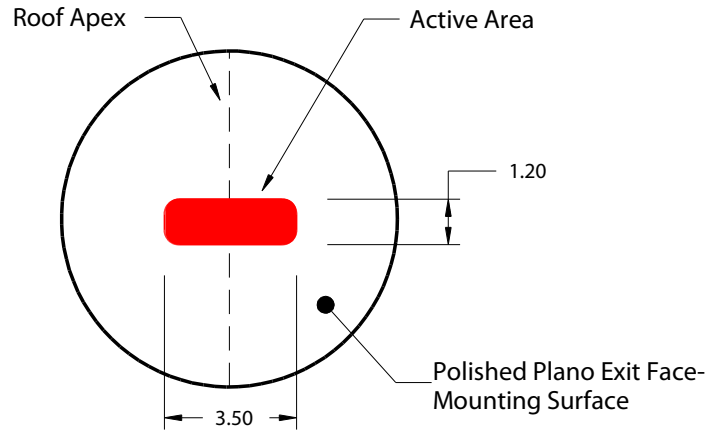
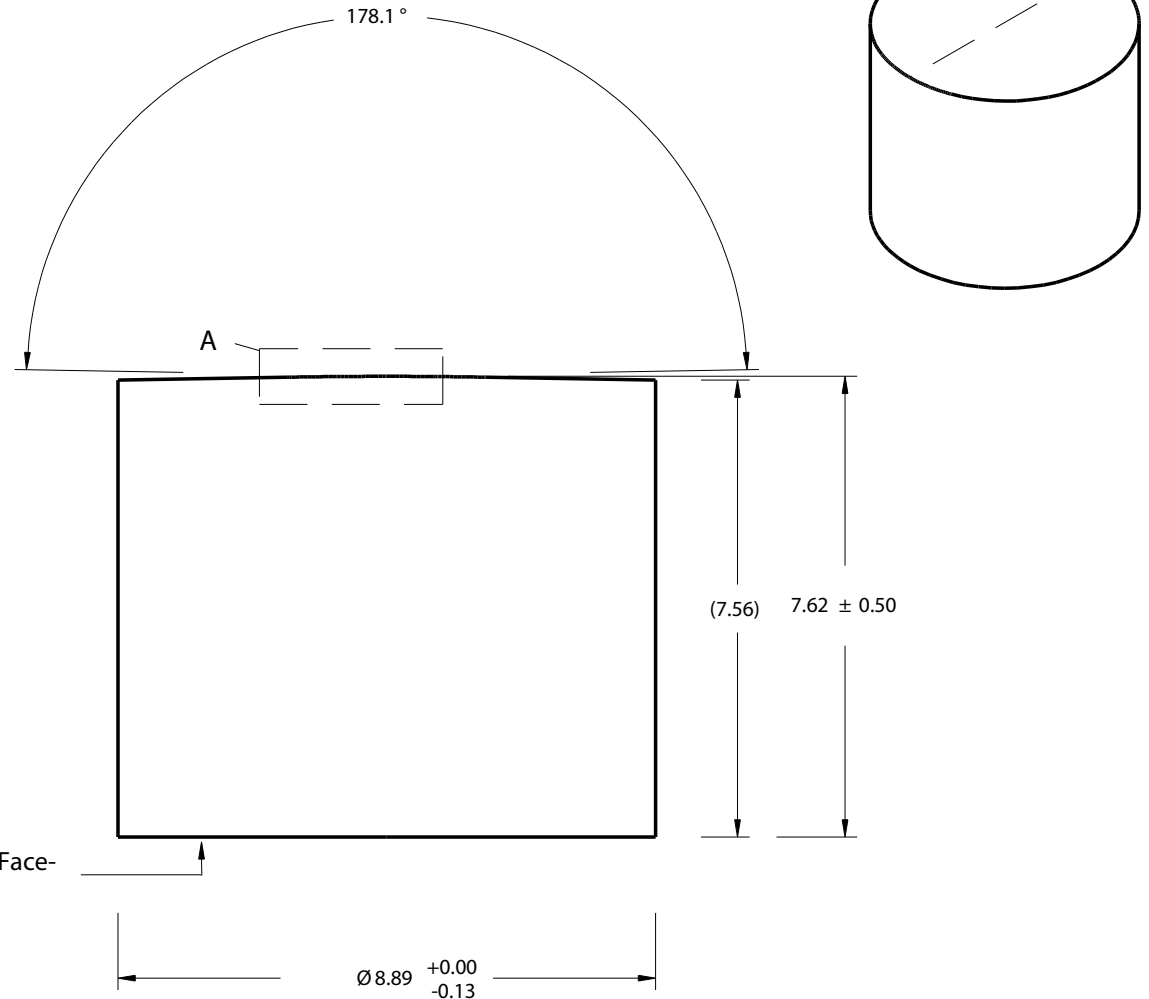
Fan angle:  $1^\circ \pm 30\%$   
 Beam Size(1): 1  
 Line uniformity(2):  $<30\%$  total variation  
 Contained power(2):  $80\% \pm 5\%$   
 Bore site:  $<4$  mrad  
 Line straightness(2):  $<0.1\%$   
 Substrate(3): BK7 or equivalent (RoHS Compliant)  
 Coating: None  
 Performance specifications assume lens matched to laser/collimator

(1) Based on  $1/e^2$   
 (2) Measured over central 80% of line length  
 (3) RoHS Directive 2002/95/EC Compliant  
 All dimensions in millimeters  
 Specifications subject to change without notice

|  |            |  |
|--|------------|--|
| <b>LASERLINE OPTICS CANADA INC.</b><br>1 - 93 Hines Rd.<br>Kanata, Ontario K2K 2M5<br>(613) 592 - 2373 - laserlineoptics.com | Scale: 8:1 | Project: Laserline Optics Canada Powell Lenses |
|  | 05/04/2012 | 1° narrow beam Powell Lens                     |



Detail A



Fan angle:  $1^\circ \pm 30\%$   
 Beam Size(1): 3.8  
 Line uniformity(2):  $<30\%$  total variation  
 Contained power(2):  $80\% \pm 5\%$   
 Bore site:  $<4$  mrad  
 Line straightness(2):  $<0.1\%$   
 Substrate(3): BK7 or equivalent (RoHS Compliant)  
 Coating: None  
 Performance specifications assume lens matched to laser/collimator

(1) Based on  $1/e^2$   
 (2) Measured over central 80% of line length  
 (3) RoHS Directive 2002/95/EC Compliant  
 All dimensions in millimeters  
 Specifications subject to change without notice

**LASERLINE OPTICS CANADA INC.**  
 1 - 93 Hines Rd.  
 Kanata, Ontario K2K 2M5  
 (613) 592 - 2373 - laserlineoptics.com

Scale: 8:1

05/04/2012

Project:

Laserline Optics Canada Powell Lenses

$1^\circ$  wide beam Powell lens